

Menston Neighbourhood Plan

Key View Assessment

This document provides an assessment of key views in Menston that are included in Menston Neighbourhood Plan policy MNP11 Key Views.

The views included in this policy have been suggested by members of the steering group following a group site visit and interactive mapping and design workshop.

In total around 8 views were suggested but some of these have been discounted due to lack of sufficient evidence or the extremely low probability that the views identified would ever be impacted by future development.

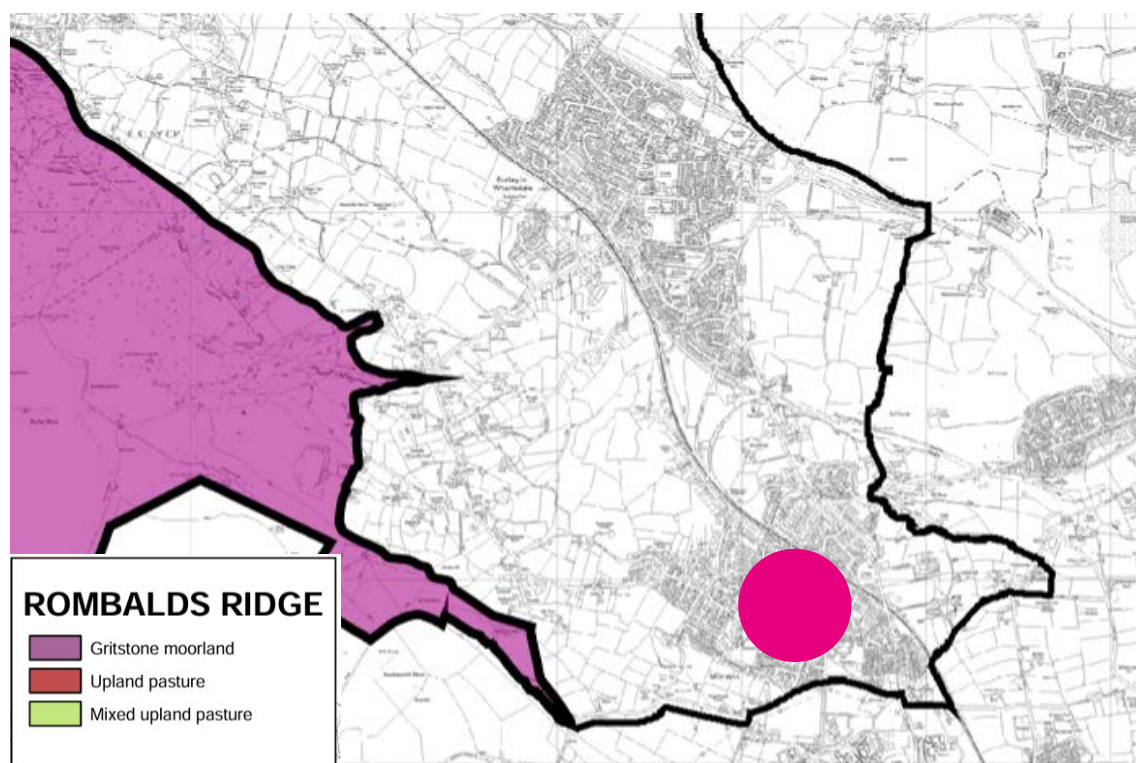
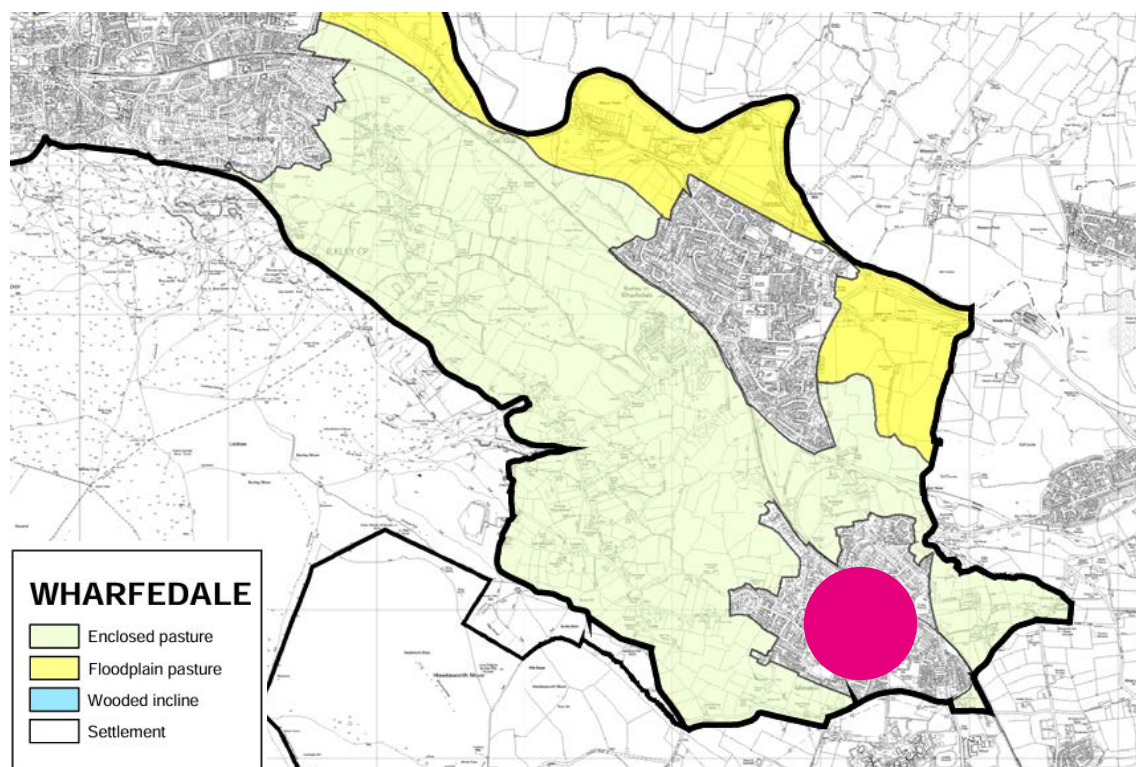
This assessment has been undertaken using the Wharfedale Landscape Character Supplementary Planning Document, the Rombalds Ridge Landscape Character Supplementary Planning Document, and the Menston Conservation Area Appraisal and is supported by images where possible.

1. View north-west down Main Street towards Four Lane Ends
2. View north-east down Fairfax Road from Menston Parish Church
3. View east from West Chevin Road
4. Views north from Bleach Mill Lane
5. Panoramic views across Wharfedale valley from Derry Hill PROW



The images below show the wider context of Menston's location in relation to the Wharfedale Landscape Character Area and the Rombalds Ridge Landscape Character Area.

The topography and setting of the village of Menston is an important defining characteristic of the area's sense of place and character. Just as important are the views within, into and out of the settlement as these give the area a wider context and often reaffirm historical associations. Menston is located on the picturesque lower slopes of the Wharfedale valley.



1. View north-west down Main Street towards Four Lane Ends

The view north-west down Main Street towards Four Lane Ends is identified as a 'Key View or Vista' in the Menston Conservation Area Assessment. The view typifies historic rural villages of West Yorkshire set amongst dramatic Pennine landscapes. Above the rooflines of traditional stone cottages and tree canopies the view terminates with Ilkley Moor, part of the South Pennine Moors within the Rombalds Ridge Landscape Character Area.

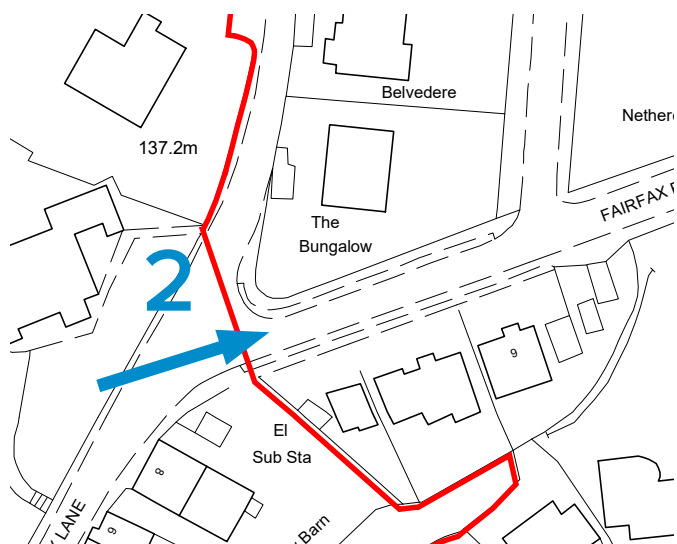
"To the west of Menston is Ilkley Moor, a rugged moorland that rises up steeply from the valley bottom. This undulating rural landscape creates peaks and troughs that limit long distance views but create an interesting and varied setting to the conservation area." Menston Conservation Area Assessment.



3. View north-east down Fairfax Road from Menston Parish Church

The view eastwards down tree-lined Fairfax Road from the edge of the conservation area offers glimpses of The Chevin in the distance above the rooflines of buildings and treetops.

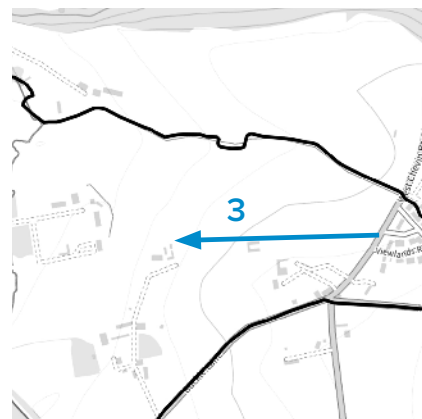
This is identified as a 'Key view or vista' in the Menston Conservation Area Appraisal.



3. View west from West Chevin Road

The view west from West Chevin Road towards Menston, showing how the village sits in the valley before it rises to Burley Woodhead. The backdrop of the village is Ilkley Moor, part of the South Pennine Moors within the Rombalds Ridge Landscape Character Area.

This is a long distance view that starts with gently undulating pastoral fields surrounding Menston. These have traditional stone wall boundaries and field patterns marked with trees and hedgerows.



Ilkley Moor



4. Views north from Bleach Mill Lane

Bleach Mill Lane is a winding track to the western edge of Menston to leads out into the open countryside. it provides long distance panoramas from multiple view points facing northwards towards Denton Moor and Askwith Moor. The skyline of Denton and Askwith Moors are highlighted as important features in the Wharfedale Landscape Character Assessment.

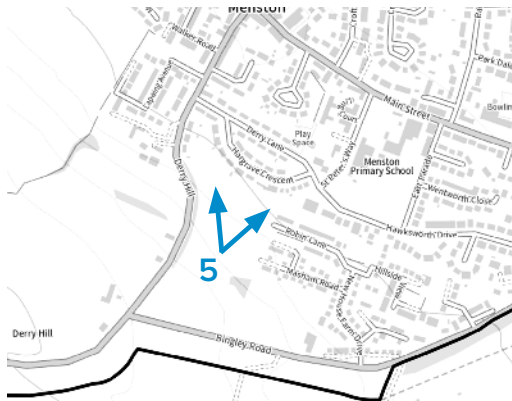
The view is over the rolling landscape and valley bottom over to Burley in Wharfedale to the opposite side of the valley and then climbing up to the ridgelines of the moors.



5. Panoramic views across Wharfedale valley from Derry Hill PROW

Panoramic views across the Wharfe Valley encompass the valley floor over Menston and Burley in Wharfedale, extending towards Askwith Moor on the opposite side of the valley. Looking eastwards, there are expansive views over Menston towards Otley Chevin.

These views are of particular importance as they illustrate the relationship between the village and its wider landscape setting, allowing it to be appreciated within the broader context of the Wharfe Valley and its surrounding upland landforms.



Askwith Moor

The Chevin

